

CTesK 2.2 Community Edition: Installation Instructions

All products mentioned in this document are covered by the trademarks or registered trademarks in the U.S.A. and/or other countries.

Copyright © 2006 Institute for System Programming, Russian Academy of Sciences
Moscow, 2006

Contents

| | |
|--------------------------------------|----|
| System requirements | 1 |
| Installation of CTesK | 1 |
| Installing in graphical mode | 1 |
| Installing in console mode | 5 |
| Uninstallation of CTesK | 8 |
| Uninstalling in graphical mode | 8 |
| Uninstalling in console mode | 9 |
| Known installation issues | 10 |

This document provides information about installation issues for CTesK 2.2 Community Edition. All known installation defects are also described along with their workarounds (see *Known installation issues* section).

Before starting the installation process make sure that your system complies with CTesK system requirements (see *System requirements* section).

System requirements

CTesK 2.2 Community Edition could be installed at any platform supported JRE (Java Runtime Environment) 1.4.x or higher and ANSI C89, C99-compatible compiler.

CTesK has been trialed under

- RedHat GNU Linux 7.3, 9.0
- Debian GNU Linux 3.0

with gcc 3.0 and later.

Installation of CTesK Community Edition

Before starting installation please make sure that JRE 1.4.x or higher is installed on your system.

Installing in graphical mode

This section describes installation in graphical mode, to install CTesK in console mode see *Installing in console mode* section.

To start installation, start appropriate CTesK setup executable contained in CTesK installation package. The list of setup executables are presented in the following table, where YYYYMMDD is a build identifier.

| Setup executable | Description |
|--|------------------|
| ctesk-ce-setup-linux-2.2.YYYYMMDD | Linux executable |
| ctesk-ce-setup-linux-2.2.YYYYMMDD.sh | Shell script |
| java -jar ctesk-ce-setup-2.2.YYYYMMDD.jar | Java archive |

If the window appearing contains the message on CTesK installer cannot find an appropriate JVM (Java Virtual Machine) , see *Known installation issues* section.

Step 1

On the first step you can see general information about CTesK Toolkit. Click **Next** button to continue.

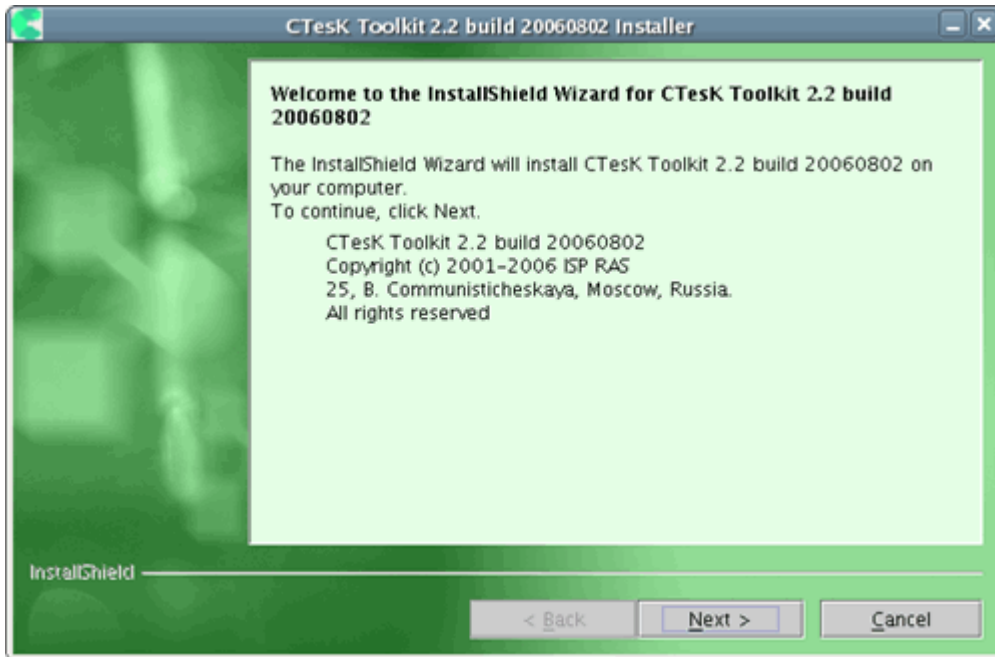


Figure 1. General information.

Step 2

On the second step you can see the licence agreement. Please, read it carefully and check the point on your agreement with the terms of the licence. If you agree choose **I accept the terms of the licence agreement** and then, click **Next** button. If you do not agree with the terms of the licence, click **Cancel** button. CTesK installation will be aborted in this case.

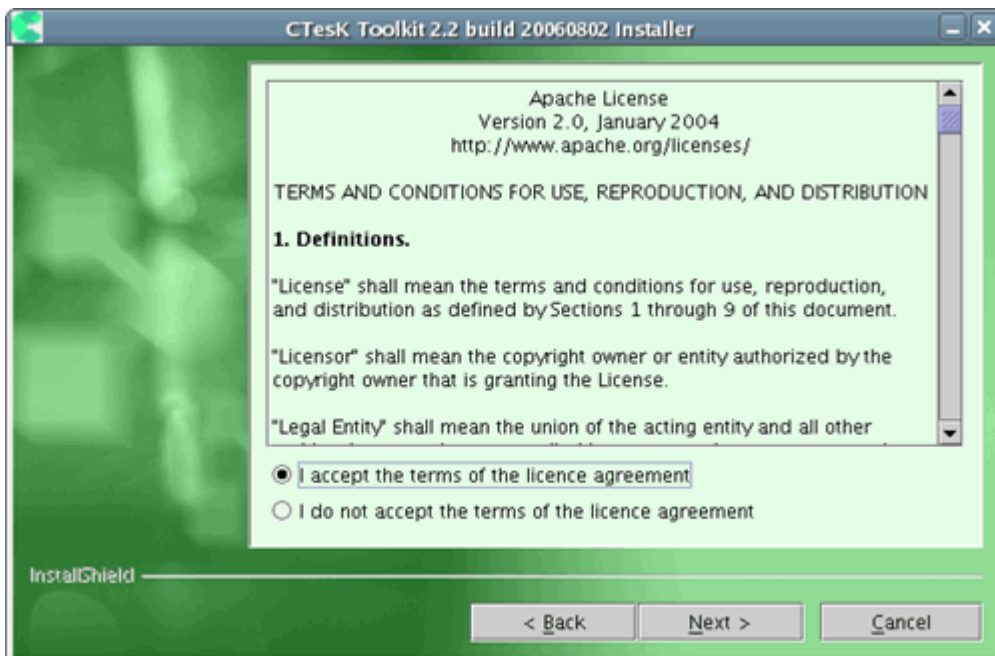


Figure 2. The terms of the licence agreement.

Step 3

On the fourth step select **Just for me** install level, if you need to install CTesK just for the current system user. If you need to install CTesK for all system users, select **For all users** install level. After selection click **Next**.

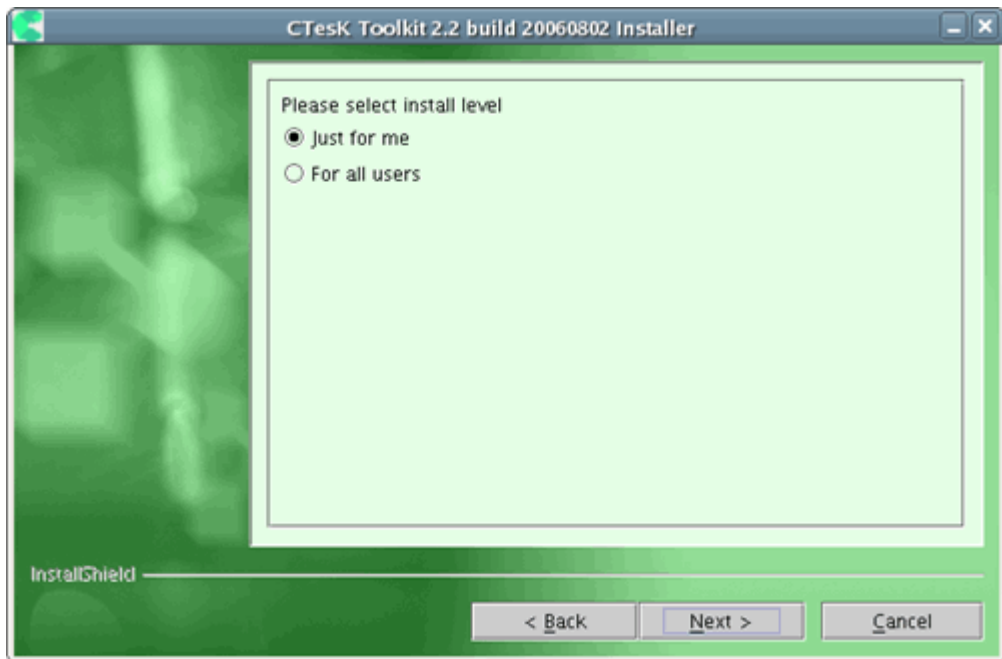


Figure 3. Install level.

Step 4

On the fifth step choose the directory to install CTesK in. By default CTesK installer uses `/opt/CTesK`. You may write its pathname by hands or use **Browse** button to select it. After that, click **Next** button again.

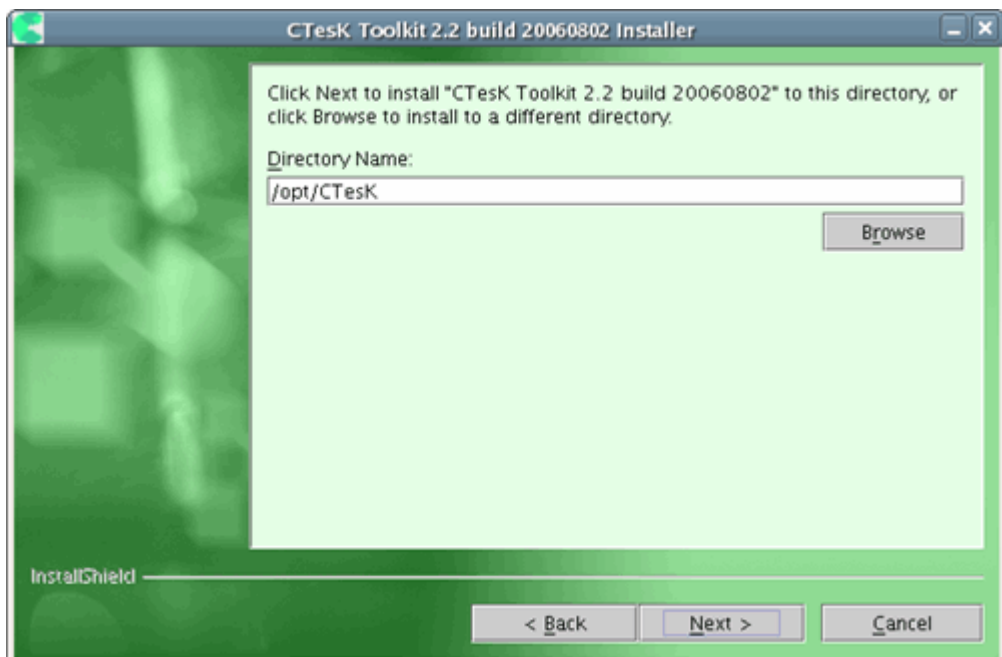


Figure 4. CTesK installation directory choosing.

Step 5

On the sixth step you can see the installation directory you have chosen and total size of CTesK after installation. If you want to change installation directory, return to the corresponding step with the help of **Back** buttons, perform the necessary changes, and return to the information window with the help of **Next** buttons. If the directory is set correctly, click **Next** button.

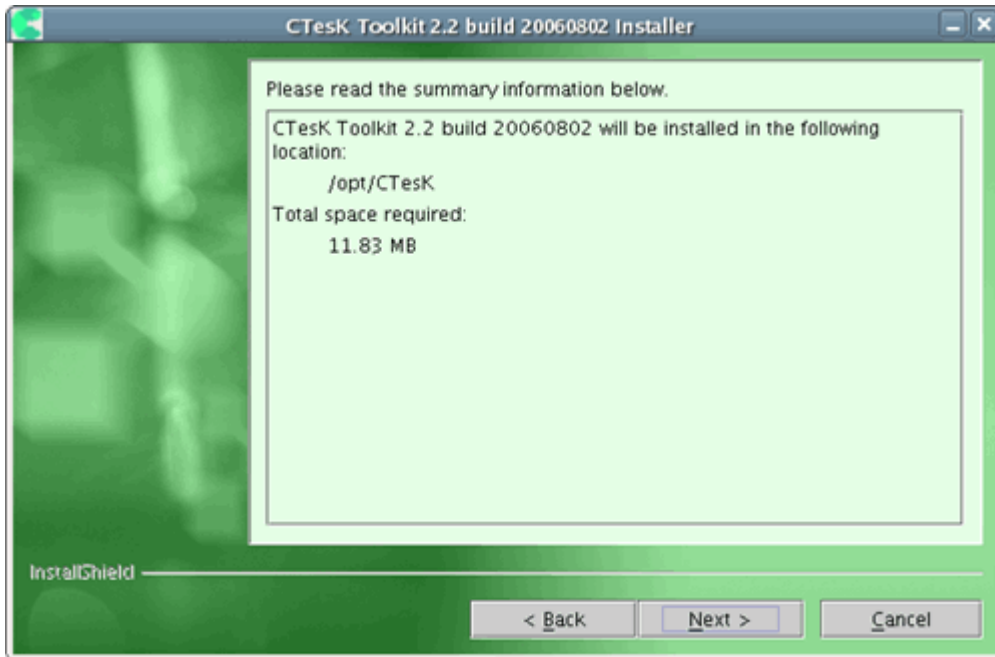


Figure 5. Information on the installation options.

Wait while the installer copies the necessary files, creates uninstaller program, and registers CTesK in the system.

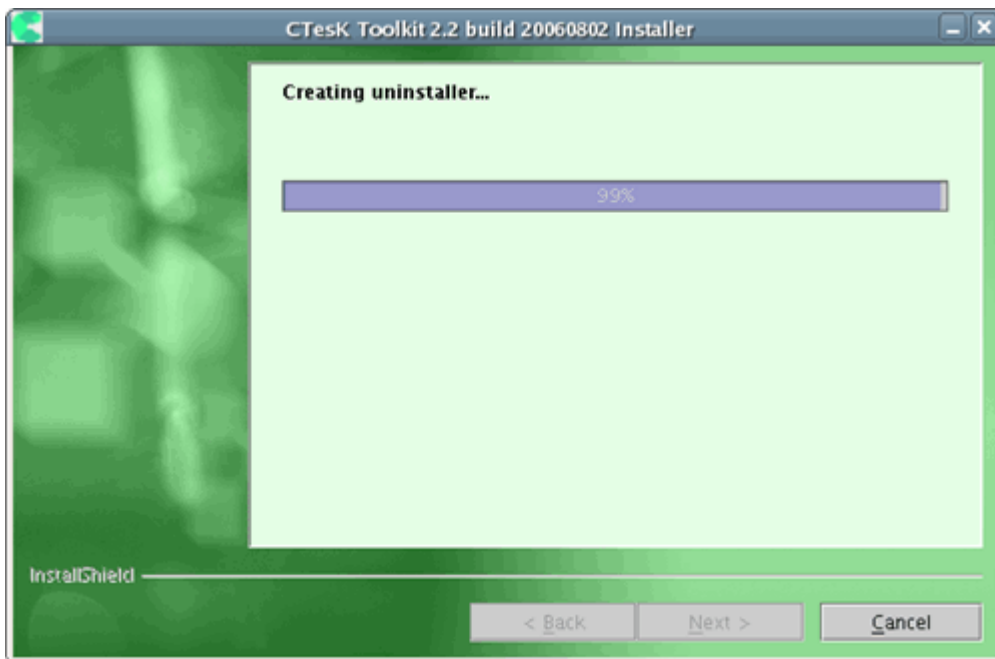


Figure 6. Coping of the files and creation of the uninstaller program.

Step 6

On the final step you can see the installation results. Click **Finish** button.

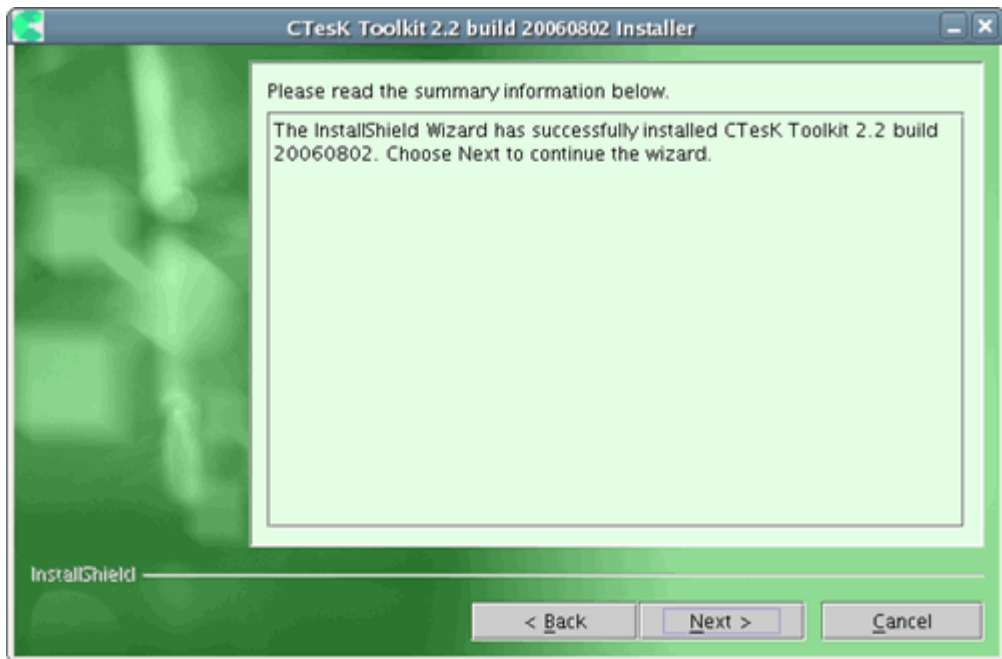


Figure 7. Finish the installation.

As installation is complete you can start using all the features of CTesK. The basic concepts of CTesK you can find in *Getting Started* document.

Installing in console mode

To start installation, start appropriate CTesK setup executable contained in CTesK installation package with option `-console`. The list of setup executables are presented in the following table. Where YYYYMMDD is a build identifier.

| Setup executable | Description |
|---|------------------|
| <code>ctesk-ce-setup-linux-2.2.YYYYMMDD -console</code> | Linux executable |
| <code>ctesk-ce-setup-linux-2.2.YYYYMMDD.sh -console</code> | Shell script |
| <code>java -jar ctesk-ce-setup-2.2.YYYYMMDD.jar -console</code> | Java archive |

If the message **A suitable JVM could not be found** is appeared, see *Known installation issues* section.

Step 1

On the first step you can see general information about CTesK Toolkit. To continue press **1** then press **ENTER**.

```
Welcome to the InstallShield Wizard for CTesK Toolkit 2.2 build
20060802

The InstallShield Wizard will install CTesK Toolkit 2.2 build 20060802
on your computer.

To continue, click Next.

CTesK Toolkit 2.2 build 20060802
Copyright (c) 2001-2006 ISP RAS
B. Communisticheskaya, 25, Moscow, Russia.
All rights reserved

Press 1 for Next, 3 to Cancel or 4 to Redisplay [1]
```

Figure 8. General information.

Step 2

On the second step you can see the licence agreement. Please, read it carefully. To read next page of license agreement press **ENTER**. Type **q** to finish reading the agreement.

If you agree with the terms of the license press **1**. In the next prompt enter **0** to confirm your agreement, then press **1**.

If you do not agree press **2**. In the next prompt enter **0** to confirm that you do not agree and then press **3**. CTesK installation will be aborted in this case.

```
Press ENTER to read the text [Type q to quit] q
Please choose from the following options:
[ ] 1 - I accept the terms of the licence agreement
[X] 2 - I do not accept the terms of the licence agreement
To select an item enter its number, or 0 when you are finished: [0] 1
Enter 0 to continue or 1 to make another selection: [0] 0
Press 1 for Next, 2 for Previous, 3 to Cancel or 4 to Redisplay [1]
```

Figure 9. The terms of the licence agreement.

Step 3

On the fourth step press **1**, if you need to install CTesK just for the current system user. If you need to install CTesK for all system users, press **2**. After that press **0**, then **0** and **1**.

```
Please select install level
[X] 1 - Just for me
[ ] 2 - For all users
To select an item enter its number, or 0 when you are finished: [0] 1
Enter 0 to continue or 1 to make another selection: [0]
Press 1 for Next, 2 for Previous, 3 to Cancel or 4 to Redisplay [1]
```

Figure 30. Install level.

Step 4

On the fifth step specify the directory to install CTesK in. By default CTesK installer uses `/opt/CTesK`. You may write its pathname by hands or use default pathname. To accept default

pathname leave directory name empty and press **ENTER**. The installer will check rights for the directory chosen, you should have write access permissions. After it press **1** to continue.

```
CTesK Toolkit 2.2 build 20060802 Install Location
Please specify a directory or press Enter to accept the default directory.
Directory Name: [/opt/CTesK]
Press 1 for Next, 2 for Previous, 3 to Cancel or 4 to Redisplay [1]
```

Figure 41. CTesK installation directory choosing.

Step 5

On the sixth step you can see installation directory you have chosen and total size of CTesK after installation. If you want to change installation directory, return to the corresponding step with the help of key **2**, perform the necessary changes, and return to the information step with the help of button **1**. If the directory is set correctly, press **1**.

```
CTesK Toolkit 2.2 build 20060802 will be installed in the following
location:
/opt/CTesK
With support for the following compilers:
GCC
Total space required:
14.29 MB
Press 1 for Next, 2 for Previous, 3 to Cancel or 4 to Redisplay [1]
```

Figure 12. Information on the installation options.

Wait while the installer copies the necessary files, creates uninstaller program, and registers CTesK in the system.

```
Installing CTesK Toolkit 2.2 build 20060802. Please wait...
0 % complete
30 % complete
40 % complete
50 % complete
80 % complete
90 % complete
Creating uninstaller...
```

Figure 13. Coping of the files and creation of the uninstaller program.

Step 6

On the final step you can see the installation results. Press **3** to finish installation.

```
The InstallShield Wizard has successfully installed CTesK Toolkit 2.2
build 20050408. Choose Finish to exit the wizard.
Press 3 to Finish or 4 to Redisplay [3]
```

Figure 14. Finish the installation.

As installation is complete you can start using all the features of CTesK. The basic concepts of CTesK you can find in the *Getting Started* document.

Uninstallation of CTesK

Uninstallation could be performed in two modes console and graphical. By default uninstallation will start in graphical mode. To start uninstallation in console mode use option `-console` (See *Uninstalling in console mode* section).

Uninstalling in graphical mode

To start CTesK uninstall process on Unix platforms, go to the `_uninst` subdirectory of CTesK home directory, and start **uninstaller** executable file.

Step 1

Click **Next** button in the opened window.

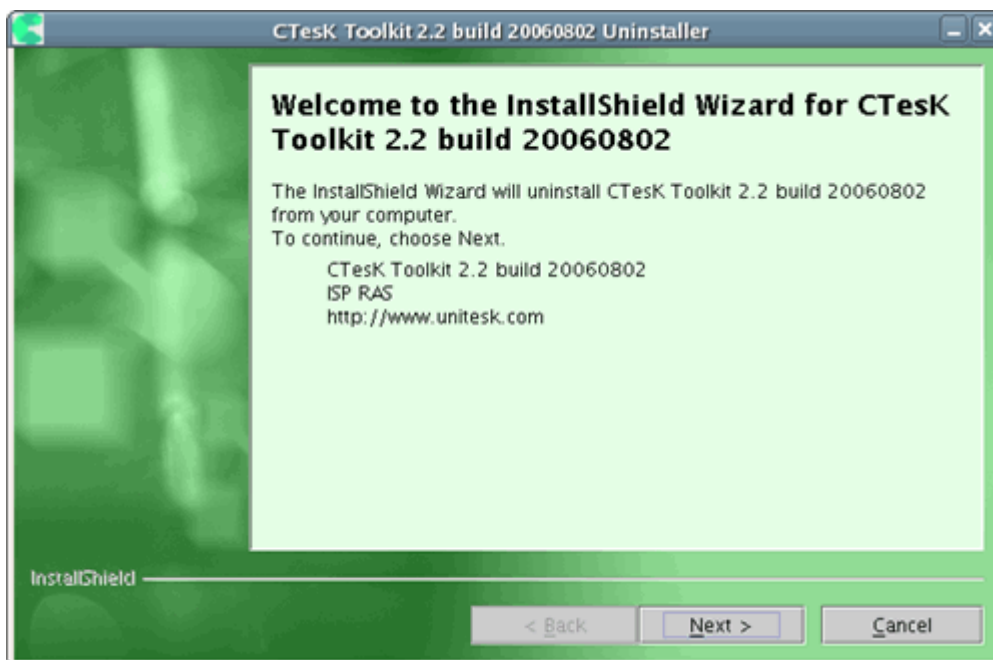


Figure 15. CTesK uninstaller.

Step 2

The next step presents the information of uninstall options. Click **Next** button. Wait for uninstall process to finish. After it uninstallation results window should appear.

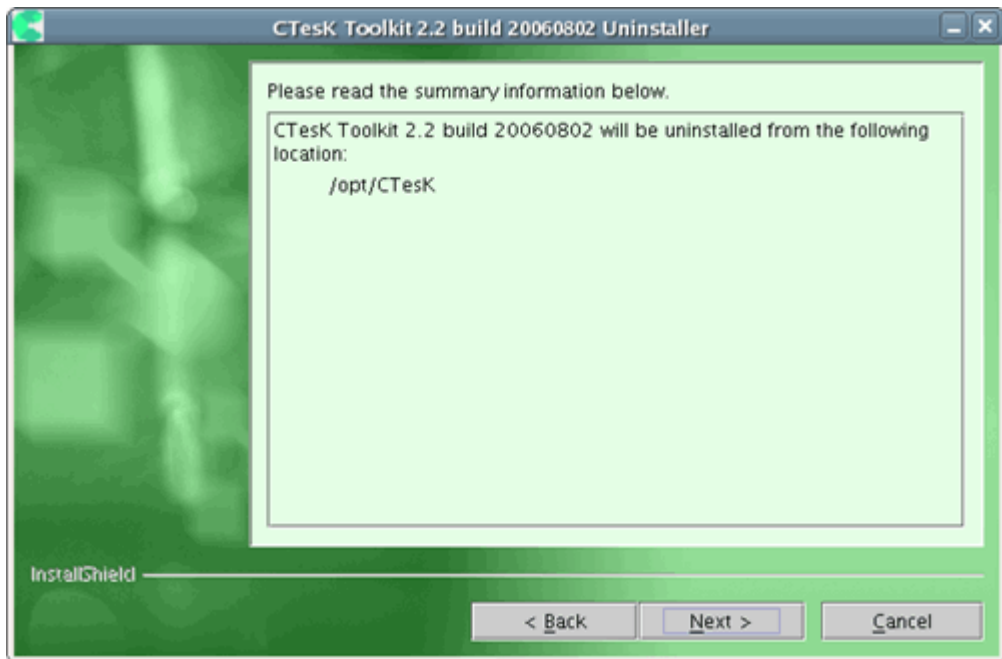


Figure 16. Information on the uninstallation options.

Step 3

Click **Finish** button after the end of uninstallation process.

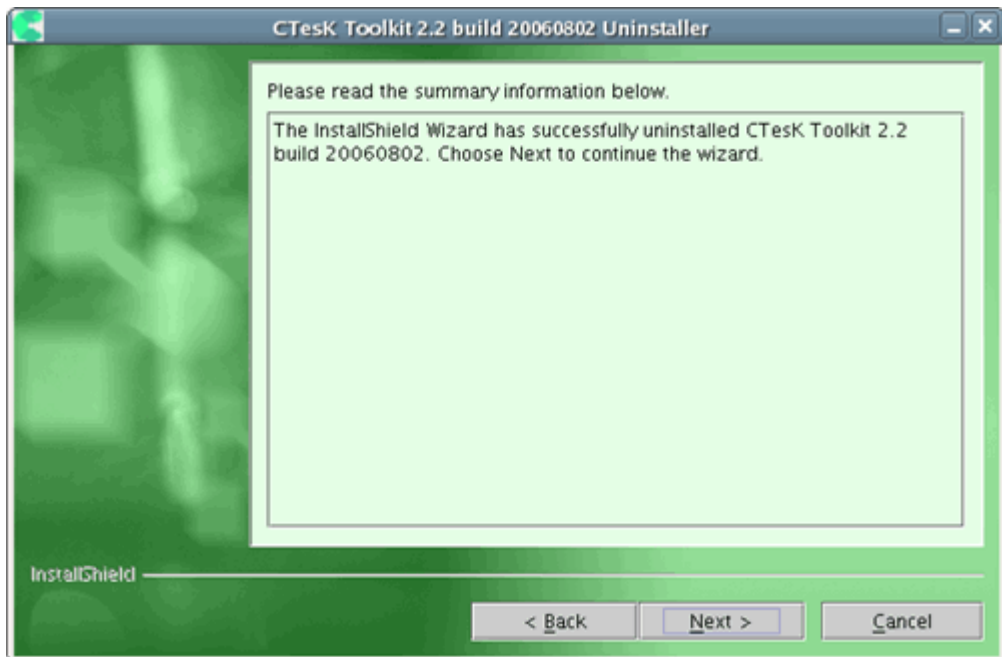


Figure 17. Finish the uninstallation.

Uninstalling in console mode

To start CTesK uninstall process in console mode, go to the `_uninst` subdirectory of CTesK home directory, and start `uninstaller` executable file with option `-console`.

Step 1

On the first step press **1** to continue uninstallation.



Figure 18. CTesK uninstaller.

Step 2

The second step is informative. It presents the information of uninstall options. Press **1** and wait for uninstall process to finish. After it uninstallation results window should appear.

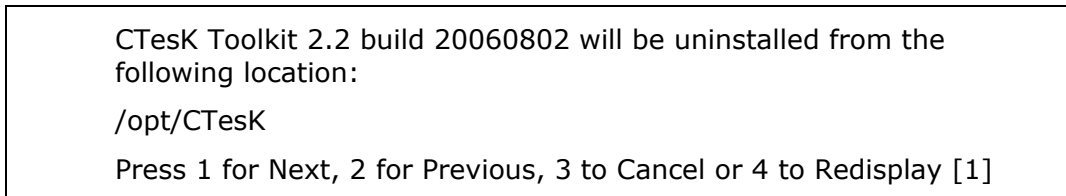


Figure 19. Information on the uninstallation options.

Step 3

Press **3** after the end of uninstallation process.

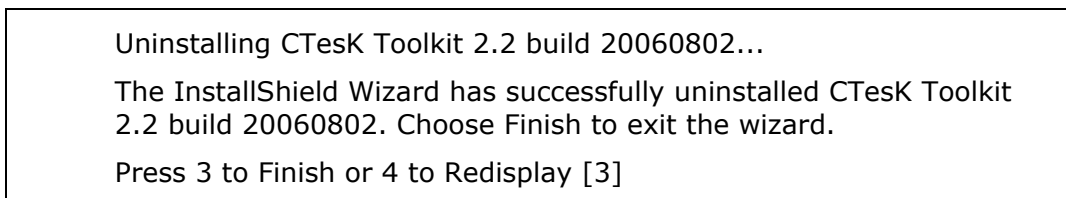


Figure 50. Finish the uninstallation.

Known installation issues

If you encounter a problem while installing CTesK, please check for information on known installation issues the next table. If the problem does not appear there, please contact UniTesK Support Service by e-mail support@unitesk.com or by phones +7 (095) 912-53-17 (4404, 4405, 4422).

| Issue No | Installation problem description | Possible solution |
|----------|--------------------------------------|---|
| 1 | At the beginning of installation the | Install J2RE (Java 2 Runtime Environment) version 1.4.0 or higher, if |

| | | |
|---|---|--|
| | message on CTesK installer cannot find an appropriate JVM (Java Virtual Machine) is appeared. | JVM has not been installed. Otherwise run the installer with option -is:javahome <JAVA HOME DIR> |
| 2 | At the beginning of installation the message “Installer requires JVM 1.4.0 or higher to be installed on your computer” appears. | The version of JVM found by installer is less than 1.4.0. If J2RE (Java 2 Runtime Environment) version 1.4.x or higher has not been installed, install it and run installation again. Otherwise, if you are running shell executable run the installer with option -is:javahome <JAVA HOME DIR>, if you are running Java archive, make sure that you are running it with JVM 1.4.0 or higher. |